

SUHSD Canvas Information for Students & Parents

Canvas Information



Canvas is a robust Learning Management System (LMS) that is widely used by education institutions worldwide, including 30% of all colleges and universities. In our area, these include the San Mateo Community College District, California State University system, University of California system, and Stanford University. SUHSD has been using Canvas since 2017. Canvas is a platform that allows teachers to post and collect content electronically in an organized and engaging way.

Below you can find tutorials and other information regarding student and parent use of the Canvas LMS.

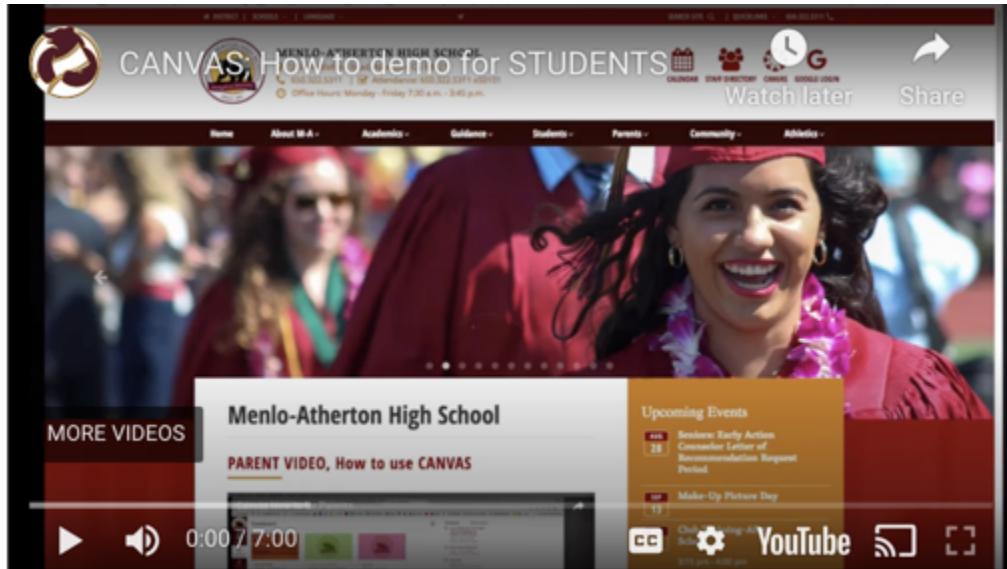
The URL for all users in our district is sequoia.instructure.com

Canvas For Students

Students can log into Canvas by going to sequoia.instructure.com and using their "usual" username and password. This is the same username and password used for gmail, Infinite Campus, and other services the district offers.

The following videos are helpful guides for students getting started with Canvas.

Student Guide to Canvas at SUHSD (internal)



Student Overview of Canvas (from Canvas)



Canvas offers a variety of resources on how to use the platform. Please access the Canvas Student Guides for more information.

- [Canvas Student Guide \(English\)](#)
- [Canvas Student Guide \(Español\)](#)

Canvas Student App

Canvas has an app available for iOS and Android devices.

- [Canvas Guide to Mobile App \(English\)](#)
- [Canvas Guide to Mobile App \(Español\)](#)

Download the app:

- [iTunes Store](#) (iOS devices)
- [Google Play Store](#) (Android-based devices)

Authorizing Google Drive in Canvas

Follow the instructions in these slides to ensure access to Google Drive in Canvas:

- [Authorizing Google Drive in Canvas \(English\)](#)
 - `<iframe src="https://docs.google.com/presentation/d/e/2PACX-1vSkdl_FRDcHJoCjxURL8Yz_WU5KfG9K6gLhxCyq_y3mu_UN54JWcAhkqYGmo_KR4kXUe3rhrLMrGnF9/embed?start=false&loop=false&delayms=3000" frameborder="0" width="960" height="569" allowfullscreen="true" mozallowfullscreen="true" webkitallowfullscreen="true"></iframe>`
- [Authorizing Google Drive in Canvas \(Spanish\)](#)
 - `<iframe src="https://docs.google.com/presentation/d/e/2PACX-1vR5lj3yDW7wuM-oLnJX2l4hEICB2f3d0hOuEUSKk-nWnYlhrbaz6JFmB4CeaExo3zqy0xSfHNeadlGE/embed?start=false&loop=false&delayms=3000" frameborder="0" width="960" height="569" allowfullscreen="true" mozallowfullscreen="true" webkitallowfullscreen="true"></iframe>`

Signing In

- Go to sequoia.instructure.com
- Use your student ID (not full email) and Password.
 - This is the same username and password you use for @seq email, etc.

The screenshot shows the login page for SUHSD Instructure. It features a green header with the SUHSD logo and a 'Browse courses' link. The main area contains a 'Username' field with the text 'mthrs', a 'Password' field with masked characters, a 'Log In' button, and a checkbox for 'Stay signed in' with a link to 'Forgot Password?'. At the bottom, there are links for 'User Research', 'Help', 'Privacy policy', 'Terms of service', and 'Feedback', along with a 'Twitter' icon and the 'INSTRUCTURE' logo.

Canvas for Parents

General Information

Parent accounts are automatically set up by the district. Information is sent out to families during the Online Information Update each spring.

As a parent, if you've lost your login information, please contact your school site's Guidance Information Specialist.

The following is a printable handout about accessing Canvas for parents:

- [Information about accessing Canvas for parents](#) (one-pager, both English and Spanish)

School	Contact Person	Contact Phone
Carlmont High School	Yvonne Chamorro	(650) 595-0210 x30097
East Palo Alto Academy	Viridiana Magallon	(650) 839-8900 x78000
Menlo-Atherton High School	Lilia Vega	(650) 322-5311 x50121
Redwood High School	Nestor Menjivar	(650) 298-8876 x77349
Sequoia High School	Mayra Melchor	(650) 367-9780 x60096
TIDE	Mayra Buenrostro	(650) 306-1755 x79011
Woodside High School	Penny Cifuentes	(650) 367-9750 x40096

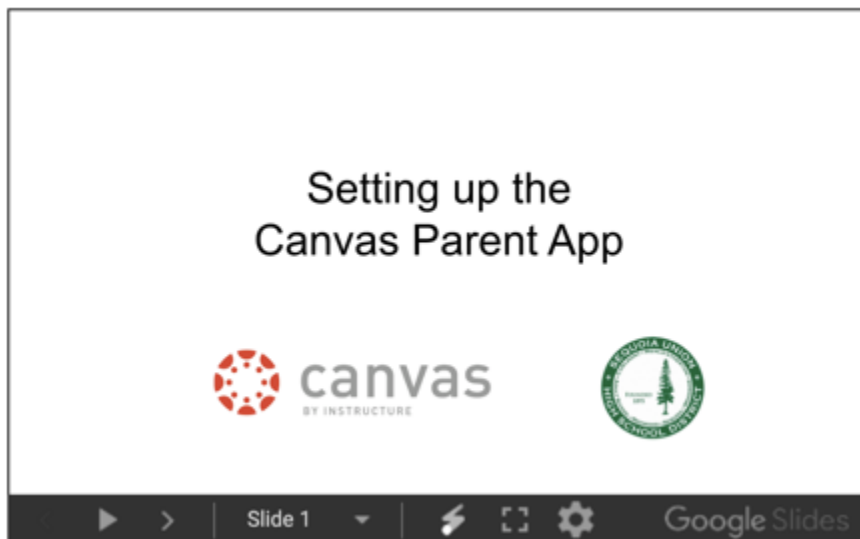
Navigating Canvas - Parents

- [Video for Parents - navigating Canvas \(English\)](#)
- Video for Parents - navigating Canvas (Espanol)
- [Slides for Parents - navigating Canvas \(English\)](#)
 - `<iframe src="https://docs.google.com/presentation/d/e/2PACX-1vRBLkPV22N6OKAXA6vOjZZBGyKWj8ho8cn_u4gpVHs2nkwpB8unq3Od7luocQDHLrWgRxuAdk7JaB07/embed?start=false&loop=false&delayms=3000" frameborder="0" width="960" height="569" allowfullscreen="true" mozallowfullscreen="true" webkitallowfullscreen="true"></iframe>`
- [Slides for Parents - navigating Canvas \(English\)](#)

- `<iframe src="https://docs.google.com/presentation/d/e/2PACX-1vSk7NneaAVurJUI-vGHVZLnp7vcWUYMvSNasKEsXwgkfMXUmOBn1DIY-StyPxBx8AOd41hPqNT14A1D/embed?start=false&loop=false&delayms=3000" frameborder="0" width="960" height="569" allowfullscreen="true" mozallowfullscreen="true" webkitallowfullscreen="true"></iframe>`

Setting up the Parent APP

- [Video for setting up the parent app \(English\)](#)
- Video for setting up the parent app (English)



New slides. Please replace the slides with these:

- [Setting up the Canvas Parent App \(English\)](#)
 - `<iframe src="https://docs.google.com/presentation/d/e/2PACX-1vR85qZ-UBtHxnrxWUg74gqI9iV-BTyfNYrLMM-ve57LQrkM-3u5UFW4mnUz7SJ9zg9OjHz_2Nhah09x/embed?start=false&loop=false&delayms=3000" frameborder="0" width="960" height="569" allowfullscreen="true" mozallowfullscreen="true" webkitallowfullscreen="true"></iframe>`
- [Setting up the Canvas Parent App \(Spanish\)](#)
 - `<iframe src="https://docs.google.com/presentation/d/e/2PACX-1vSJshHKI-6CeDYTfAUmf_dLlfP0zS1C5294GI7-NldRFBfuZWWbTCjIjztfLYrX_QzUH99JnmI9maKd/embed?start=false&loop=false&delayms=3000" frameborder="0" width="960" height="569" allowfullscreen="true" mozallowfullscreen="true" webkitallowfullscreen="true"></iframe>`

Additional Information from Canvas about using the Canvas mobile app for parents:

- [Canvas Parent App \(English\)](#)
- [Canvas Parent App \(Español\)](#)

Download the Canvas Parent App

- [iTunes Store](#) (iOS devices)
- [Google Play Store](#) (Android-based devices)